

# BRUCE MATHER

---

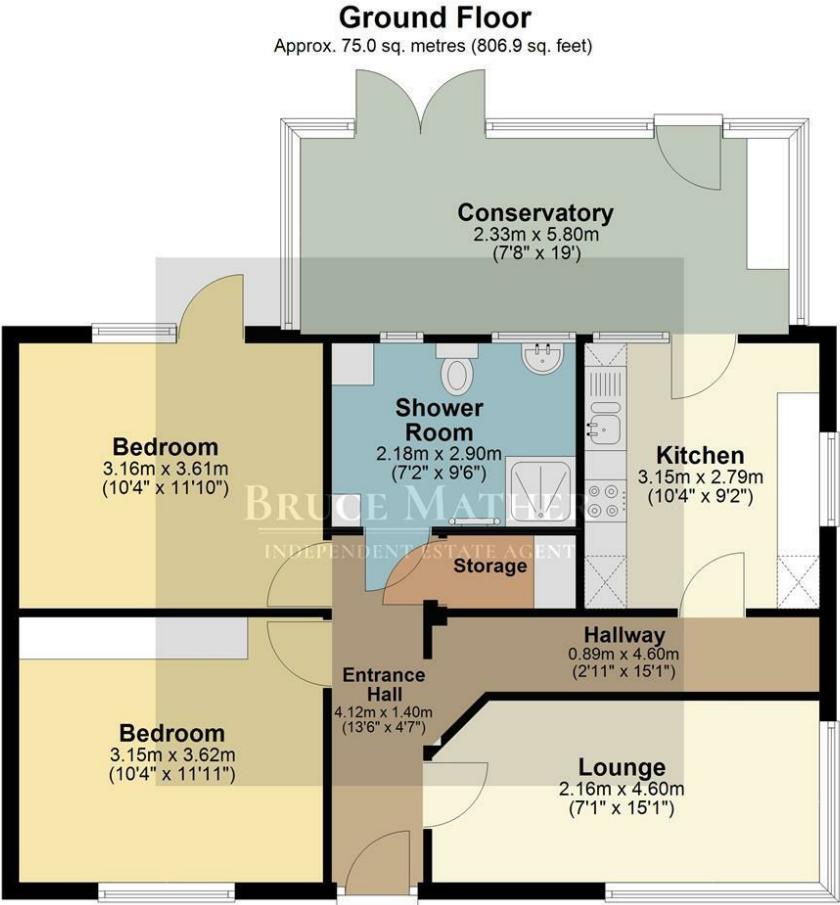
## INDEPENDENT ESTATE AGENT



**7 Marsh Avenue, Boston, PE21 7RL**  
**Asking Price £140,000**

A detached and refurbished 2/3 bedroom prefabricated bungalow with a good size garden to the rear, parking to the size with potential to be a good rental or a home in South Boston. STP there is a 3 bedroom buy to let potential or a two bedroom home with a reception room, new shower room and new kitchen leading to a large conservatory overlooking the garden. Located in Boston where there are shops, restaurants, schools and Pilgrim hospital all to hand. Being sold with NO CHAIN please call Bruce Mather Estate Agents on 01205365032 to arrange a viewing.

Floor Plan

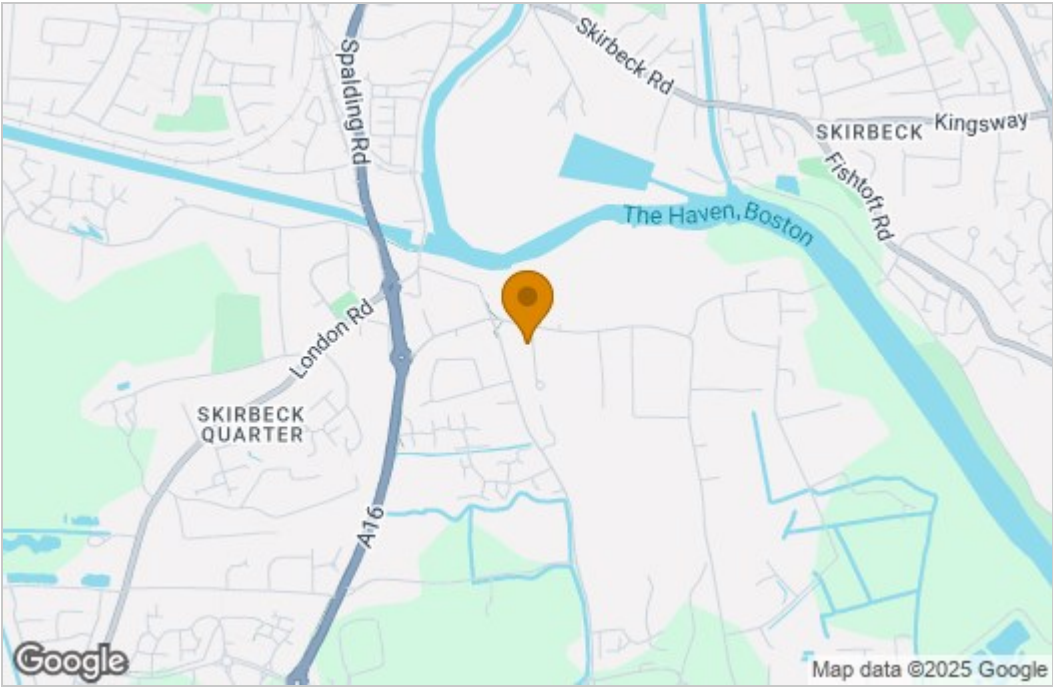


Total area: approx. 75.0 sq. metres (806.9 sq. feet)

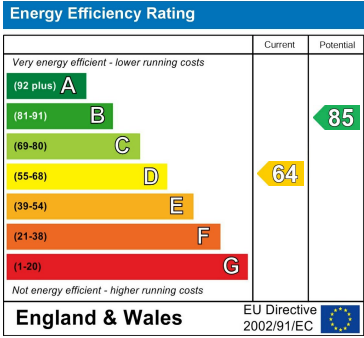
All images used are for illustrative purposes. Images are for guidance only and may not necessarily represent a true and accurate depiction of the condition of property. Floor plans are intended to give an indication of the layout only. All images, floor plans and dimensions are not intended to form part of any contract.  
Plan produced using PlanUp.



Area Map



Energy Efficiency Graph



These particulars, whilst believed to be accurate are set out as a general outline only for guidance and do not constitute any part of an offer or contract. Intending purchasers should not rely on them as statements of representation of fact, but must satisfy themselves by inspection or otherwise as to their accuracy. No person in this firm's employment has the authority to make or give any representation or warranty in respect of the property.